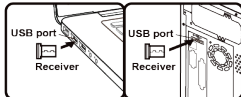






Deutsch

Hardware-Installation: 1. Legen Sie eine AA-Batterie in die Maus und zwei AAA-Batterien in die Tastatur ein.



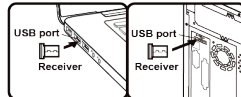
Batterien austauschen: Wenn die Maus oder Tastatur nicht richtig funktioniert, sind die Batterien entladen und müssen ausgetauscht werden.

Belegung der Maustasten: 1. Linke Taste: Bietet herkömmliche Maustfunktionen wie Klicks, Doppelklicks und Zielen.

Table with 2 columns: Function key (Fn+F1 to Fn+F11) and corresponding action (Media Player, Volume, Mute, etc.).

Français

Installation du matériel: 1. Installez une pile AA dans la souris et deux piles AAA dans le clavier.



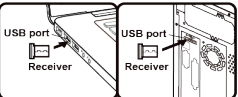
Remplacez les piles: Si la souris ou le clavier ne fonctionnent pas correctement, les piles ont perdu leur charge et vous devez donc les remplacer.

Affectations des boutons de la souris: 1. Bouton gauche: fournit des fonctions de souris traditionnelles telles que cliquer, double-cliquer et faire glisser.

Table with 2 columns: Function key (Fn+F1 to Fn+F11) and corresponding action (Lecteur multimédia, Volume, Muet, etc.).

Italiano

Installazione dell'hardware: 1. Installare una batteria AA nel mouse e due batterie AAA nella tastiera.



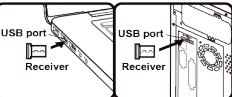
Sostituzione delle batterie: Se il mouse o la tastiera non funzionano correttamente, le batterie hanno perso la carica ed è quindi necessario sostituirle.

Assegnazioni dei pulsanti del mouse: 1. Pulsante sinistro: fornisce le funzioni tradizionali del mouse come clic, doppio clic e trascinamento.

Table with 2 columns: Function key (Fn+F1 to Fn+F11) and corresponding action (Media Player, Volume, Mute, etc.).

Brasil

Instalação de hardware: 1. Instale uma bateria AA no mouse e duas baterias AAA no teclado.



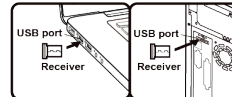
Substitua as baterias: Se o mouse ou teclado não funcionar corretamente, as baterias perderam a carga e será necessário substituí-las.

Atribuições dos botões do mouse: 1. Botão Esquerdo: Fornece funções tradicionais do mouse, como clicar, clicar duas vezes e arrastar.

Table with 2 columns: Function key (Fn+F1 to Fn+F11) and corresponding action (Reprodutor de mídia, Volume, Mudo, etc.).

Português

Instalação de hardware: 1. Instale uma bateria AA no mouse e duas baterias AAA no teclado.



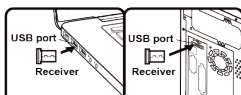
Substitua as baterias: Se o mouse ou teclado não funcionar corretamente, as baterias perderam a carga e será necessário substituí-las.

Atribuições dos botões do mouse: 1. Botão Esquerdo: Fornece funções tradicionais do mouse, como clicar, clicar duas vezes e arrastar.

Table with 2 columns: Function key (Fn+F1 to Fn+F11) and corresponding action (Reprodutor de mídia, Volume, Mudo, etc.).

Slovensčina

Namestitev strojne opreme: 1. Namestite eno baterijo AA v miško in dve bateriji AAA v tipkovnico.



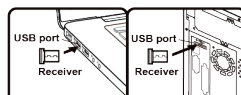
Zamenjava baterij: Če miška ali tipkovnica ne deluje pravilno, so se baterije izpraznile, zato jih morate zamenjati.

Dodelitve gumbov miške: 1. Levni gumb: Omogoča tradicionalne funkcije miške, kot so klik, dvojni klik in večkratje.

Table with 2 columns: Function key (Fn+F1 to Fn+F11) and corresponding action (Medijski predvajalnik, Glasnost, Glasnost+, etc.).

Slovenčina

Instalacia hardvéru: 1. Vložte jednu AA batériu do myši a dve AAA batérie do klávesnice.



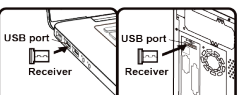
Vymeňte batérie: Ak myš alebo klávesnica nefunguje správne, batérie sa vybiti, takže ich musíte vymeniť.

Priradenia tlačidiel myši: 1. Ľavé tlačidlo: Poskytuje tradičné funkcie myši ako kliknutie, dvojitú kliknutia a ťahanie.

Table with 2 columns: Function key (Fn+F1 to Fn+F11) and corresponding action (Mediálny prehrávač, Glasnosť, Glasnosť+, etc.).

Hrvatski / Bosanski / Srpski

Instalacija hardvera: 1. Instalirajte jednu AA bateriju u miš i dve AAA baterije u tastaturu.



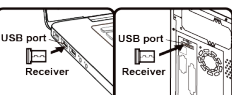
Zamjenite baterije: Ako miš ili tastatura ne radi kako treba, znači da su baterije izgubile napajanje, pa ih morate zamijeniti.

Zadaci tastera miša: 1. Ljevo dugme: Omogućava tradicionalne funkcije miša kao što su klik, dvostruki klik i prevlačenje.

Table with 2 columns: Function key (Fn+F1 to Fn+F11) and corresponding action (Media Player, Glasnost, Glasnost+, etc.).

Română

Instalare hardware: 1. Instalati o baterie AA în mouse și două baterii AAA în tastatură.



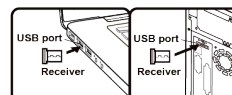
Înlocuiri bateriile: Dacă mouse-ul sau tastatura nu funcționează corect, atunci bateriile și-au pierdut încărcarea, așa că trebuie să le înlocuiți.

Atribuiriile butonelor mouse-ului: 1. Butonul din stânga: Oferă funcții tradiționale ale mouse-ului, cum ar fi clic, dublu clic și tragere.

Table with 2 columns: Function key (Fn+F1 to Fn+F11) and corresponding action (Reprodător de medii, Volum, Mute, etc.).

Български

Хардуерна инсталация: 1. Поставете една AA батерия в мишката и две AAA батерии в клавиатурата.



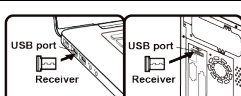
Смяната батериите: Ако мишката или клавиатурата не работят правилно, значи батериите са изгубили своя заряд, така че трябва да ги смените.

Назначения на бутоните на мишката: 1. Ляв бутон: Осигурява традиционни функции на мишката като щракване, двойно щракване и претангане.

Table with 2 columns: Function key (Fn+F1 to Fn+F11) and corresponding action (Медия плейър, Гласност, Гласност+, etc.).

Ελληνικά

Εγκατάσταση υλικού: 1. Τοποθετήστε μία μπαταρία AA στο ποντίκι και δύο μπαταρίες AAA στο πληκτρολόγιο.



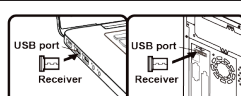
Αντικατάσταση μπαταριών: Εάν το ποντίκι ή το πληκτρολόγιο δεν λειτουργούν σωστά, τότε οι μπαταρίες έχουν χάσει τη φόρτιση τους, επομένως πρέπει να τις αντικαταστήσετε.

Εκχώρηση κωδικών συντόμων: 1. Αριστερό κουμπί: Παρέχει παραδοσιακές λειτουργίες του ποντικιού όπως κλικ, διπλό κλικ και σύρσιμο.

Table with 2 columns: Function key (Fn+F1 to Fn+F11) and corresponding action (Μεταγωγέας ΜΜ, Ηχοστάθμη, Ηχοστάθμη+, etc.).

Türkçe

Donanım kurulumu: 1. Fareye bir adet AA pil ve klavyeye iki adet AAA pil takın.



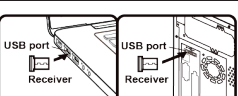
Pilleri değiştirin: Fare veya klavye düğmesi çalışmıyorsa piller sarjlarını kaybetmiş demektir, bu nedenle pilleri değiştirilmelidir.

Fare düğmelerinin atamaları: 1. Sol Düğme: Tıklama, çift tıklama ve sürükleme gibi geleneksel fare işlevlerini sağlar.

Table with 2 columns: Function key (Fn+F1 to Fn+F11) and corresponding action (Medya oynatıcı, Ses Gücü, Ses Gücü+, etc.).

Eesti

Riistvara paigaldamine: 1. Paigaldage üks AA patarei hiire ja kaks AAA patarei klaviatuuris.



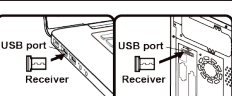
Vahetage patareid: Kui hiir või klaviatuur ei tööta korralikult, on akud tühiaks saanud, mistõttu tuleb need välja vahetada.

Hiirenupu ülesanded: 1. Vasak nupp: pakub traditsioonilisi hiire funktsioone, nagu klõps, topelklõps ja lohutamise.

Table with 2 columns: Function key (Fn+F1 to Fn+F11) and corresponding action (Meediapleier, Helitugevus, Helitugevus+, etc.).

Latviešu

Aparatūras uzstādīšana: 1. Ievietojiet vienu AA bateriju peļei un divas AAA baterijas klaviatūrā.



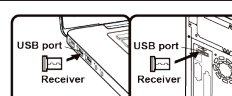
Nomainiet baterijas: Ja peļei vai tastatūra nedarbojas pareizi, baterijas ir zaudējušas uzlādi, tādēļ tās ir jānomaina.

Peļes pogu uzdevumi: 1. Kreisā nūpa: nodrošina tradicionālās peļes funkcijas, piemēram, klikšķi, dubultklikšķi un vilkšanu.

Table with 2 columns: Function key (Fn+F1 to Fn+F11) and corresponding action (Multivides atskaņotājs, Skājum-, Skājum+, etc.).

Lietuvių

Aparatūros įrengimas: 1. Įdėkite vieną AA tipo bateriją į pelę ir dvi AAA baterijas klaviatūroje.



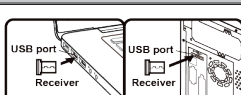
Pakeiskite baterijas: Jei pelės ar klaviatūra neveikia tinkamai, vadinasi, baterijos išsikrovė, todėl jas reikia pakeisti.

Peļės mygtukų priskyrimas: 1. Kairysis mygtukas: suteikia tradicines peļes funkcijas, tokias kaip spustelėjimas, dukart spustelėjimas ir vilkimas.

Table with 2 columns: Function key (Fn+F1 to Fn+F11) and corresponding action (Grotuvas, Apimtis-, Apimtis+, etc.).

Bahasa Indonesia

Instalasi perangkat keras: 1. Pasang satu baterai AA ke mouse dan dua baterai AAA ke keyboard.



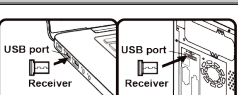
Ganti baterai: Jika mouse atau keyboard tidak berfungsi dengan benar, maka daya baterainya sudah habis, sehingga Anda perlu menggantinya.

Penetapan tombol mouse: 1. Tombol Kiri: Menyediakan fungsi mouse tradisional seperti klik, klik dua kali, dan seret.

Table with 2 columns: Function key (Fn+F1 to Fn+F11) and corresponding action (Pemutar Media, Volume, Volume+, etc.).

Tiếng Việt

Cài đặt phần cứng: 1. Lắp vào pin AA vào chuột và hai pin AAA vào bàn phím.



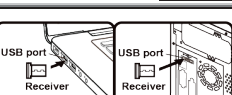
Thay pin: Nếu chuột hoặc bàn phím không hoạt động bình thường thì pin đã hết điện nên bạn cần thay thế chúng.

Nhiệm vụ của nút chuột: 1. Nút trái: Cung cấp các chức năng chuột truyền thống như nhấp, nhấp đúp và kéo.

Table with 2 columns: Function key (Fn+F1 to Fn+F11) and corresponding action (Media Player, Âm lượng, Âm lượng+, etc.).

ภาษาไทย

การติดตั้งฮาร์ดแวร์: 1. ติดตั้งแบตเตอรี่ AA หนึ่งก้อนลงในเมาส์ และแบตเตอรี่ AAA สองก้อนลงในแป้นพิมพ์.



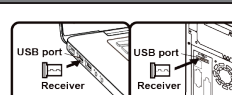
เปลี่ยนแบตเตอรี่: หากเมาส์หรือแป้นพิมพ์ไม่ทำงานอย่างถูกต้อง นั่นอาจเป็นเพราะแบตเตอรี่หมดแล้ว

หน้าที่ของปุ่มเมาส์: 1. ปุ่มซ้าย: ให้ฟังก์ชันเมาส์แบบดั้งเดิม เช่น คลิก, คลิกสองครั้ง และลาก

Table with 2 columns: Function key (Fn+F1 to Fn+F11) and corresponding action (ตัวเล่นสื่อ, ปริมาณเสียง, ปริมาณเสียง+, etc.).

简体中文

硬件安装: 1. 将 1 节 AA 电池安装到鼠标中, 将两节 AAA 电池安装到键盘上。



更换电池: 如果鼠标或键盘无法正常工作, 则表明电池电量耗尽, 因此需要更换不同类型的电池。

鼠标按键分配: 1. 左键: 提供单击、双击、拖动等传统鼠标功能。

Table with 2 columns: Function key (Fn+F1 to Fn+F11) and corresponding action (媒体播放器, 音量, 音量+, etc.).